

INSIGHT



DIGITAL INFRASTRUCTURE: INVESTING IN THE NEXT GENERATION

**WALDECK
OPEN HONG
KONG
OFFICE**

**FURTHER
FUNDING FOR
DRONE
RESEARCH**

DIGITAL INFRASTRUCTURE: INVESTING IN THE NEXT GENERATION



As we recently learned the UK government announced its latest update for the National Infrastructure and Construction Pipeline, confirming a larger budget of £600 billion investment over the next 10 years, and also driving the construction industry to reinvent itself by implementing significant changes in the way projects are delivered. The UK Government's 2025 productivity challenges are the key drivers of this change and investment with BIM and now Off-Site DfMA Solutions being mandated too.

Paul Waldeck, Founder and CEO, comments on how Waldeck has made significant investments which has seen the company grow within the industry, and now positioned to create added value solutions that comply and exceed the expectations of the recent directives.

"Infrastructure has the power to increase our living standards, drive economic growth and boost productivity, which is why we see this as a huge focus and the central pillar of the recent Industrial Strategy.

"As a company, we are strategically positioned to create added value solutions for the government's planned investments in infrastructure, by deploying our unique digital offering to deliver successful outcomes at all stages of the project lifecycle.

"Furthermore, we have made significant investment over many years', our R&D advances and emerging service lines are keeping us ahead of the market, in terms of digital and technology solutions, allowing us to identify and develop capital and operational investment solutions for our clients, which are both cost effective, efficient and resource smart."

Digital technology has, and continues to be, the core of the way we do business and communicate with each other. The amount of data being carried over networks grows. As the industry sees the digital revolution further unfold, Waldeck continues to promote its investment in its digital expertise and collaborate with academia and industry to develop innovative, yet practical solutions. Our latest CAPEX Project Delivery App is another first, which can, in a single model, scenario test 3D, 4D and 5D i.e. Design Schedule and Cost are integrated as a commercial Digital Prototype

Furthermore, Artificial Intelligence (AI) and machine learning could play a big part in making the UK's infrastructure network more efficient. A focus on the theory of AI, which believes that all human thought could be reduced to a series of mathematical rules, and supporting machinery to replace human labour.

Paul discusses the concept and initial reaction to the term, stating that most people see it as a negative. However, Paul is keen to point out that Waldeck are looking to use AI as an aide rather than a replacement.

"The term Artificial Intelligence (AI) seems to frighten people, and they assume this means that soon all humans will be replaced by robots, this will not happen overnight, if at all.

"For Waldeck, AI is not about taking the jobs away, it's about implementing such technology to enhance and expand an offering that already exists, in a better, data-centric way. This new approach provides benefits, such as; increased efficiency, safety, commercial outcomes and quality of construction projects."

Waldeck see the use of AI developing through many of its digital capabilities; such as creating smarter construction using drones surveying sites, creating 3D maps and extracting data to simulate construction plans. A process which typically took weeks, can now be completed in just a few hours.

In the UK's infrastructure world, we have begun to see this concept come to surface through Smart Enterprises', as we leverage Artificial Intelligence and machine learning technologies, to bolster customer experience, improve security and optimise operations. Paul shares the benefits he believes smart enterprises can add to the company.

"Through our Smart Enterprise offering, we believe that new developments should be fitted with smart infrastructure to monitor the performance of the built environment through enhanced data collection."

An increase in national productivity, which is a key driver in the future pipeline investment and is why we see an emphasis on Modern Methods of Construction (MMC), such as off-site design for manufacture & assembly, and modular construction. Paul comments on how Waldeck will embrace these developments and adapt to these requirements.

"Off-site construction solutions are set to grow rapidly now, on the back of this Government investment commitment and recent directives on digital and MMC. With Waldeck being very early adopters of Building Information Modelling (BIM) for off-site construction solutions a decade ago, we are already positioned and ready to support this pipeline of projects.

"Embracing the government drive to off-site methods of construction by 2019, we offer clients extensive experience and expertise in the design and development of modular construction and component based off-site manufactured and site assembled solutions, such as precast structural and façade solutions, and mechanical and electrical building services systems, enhancing project delivery for schools, housing, student and key worker accommodation, hospitals, laboratories, prisons, hotels, car parks, and stadia."

Paul concluded that for the UK to stay competitive globally, it must continue to be at the cutting edge of technology and deploy digital to create certainty of outcomes for CAPEX and OPEX.

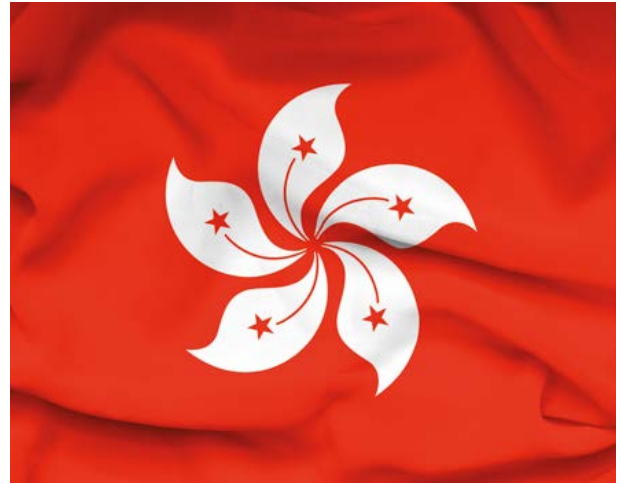
"Digital is the future, and will transform the future of the construction industry. This change is happening now and will only accelerate ever more rapidly. Those that fail to evolve will have no place in the market of the future.

WALDECK OPEN HONG KONG OFFICE

Waldeck has launched its first overseas office in Hong Kong. This follows our recent contract award for the US\$18 billion Hong Kong International Airport '3RS' project, and further contract wins with major clients in Hong Kong, and the broader APAC region.

The office will focus on the delivery of Building Information Modelling (BIM), Capex Delivery Assurance using the single point Design Schedule Cost integration app and Digital Twin Asset Lifecycle solutions for major smart infrastructure programmes across the industry.

The opening coincides with the launch of the 'China-UK Centre of Excellence for Digital Design and Construction', which we were founding members of, following a invitation only UK-China Construction Workshop, in 2017.



Paul Waldeck, Founder and CEO, said: "The launch of the Hong Kong office is a huge milestone in Waldeck's history, and sets the scene for a future pipeline of major projects from key clients across Hong Kong, and the broader APAC region.

"We have been working closely with key stakeholders and organisations in Hong Kong for some time now, and look forward to building on these relationships as we begin work on international infrastructure projects.

"We look forward to being part of the development of the relationships and capabilities of the UK and APAC region, whilst exploring the challenges, both in research and in industrial practices."



“WORKING WITH THE UNIVERSITY OF HUDDERSFIELD, WE WILL BE TESTING, DEVELOPING AND IMPROVING WORKFLOWS IN THE APPLICATION OF UAV TECHNOLOGY”

FURTHER FUNDING FOR DRONE RESEARCH

Waldeck has successfully been awarded additional funding with The University of Huddersfield to further our Unmanned Aerial Vehicle (UAV) research, and support future developments in this area.

This follows 2017's announcement of £120k Government-backed funding through Innovate UK, to boost our in-house digital-focussed Research and Development (R&D) team.

The additional funding will enable our digital reality capture experts to continue to work in conjunction with the University of Huddersfield, to further explore emerging technologies and develop our advanced capability even more.

New software and equipment purchased through the funding will see the addition of thermal imaging capability into our Research and Development roadmap. Key applications of this will include energy performance analysis, disaster recovery, search and rescue, and aerial filming.

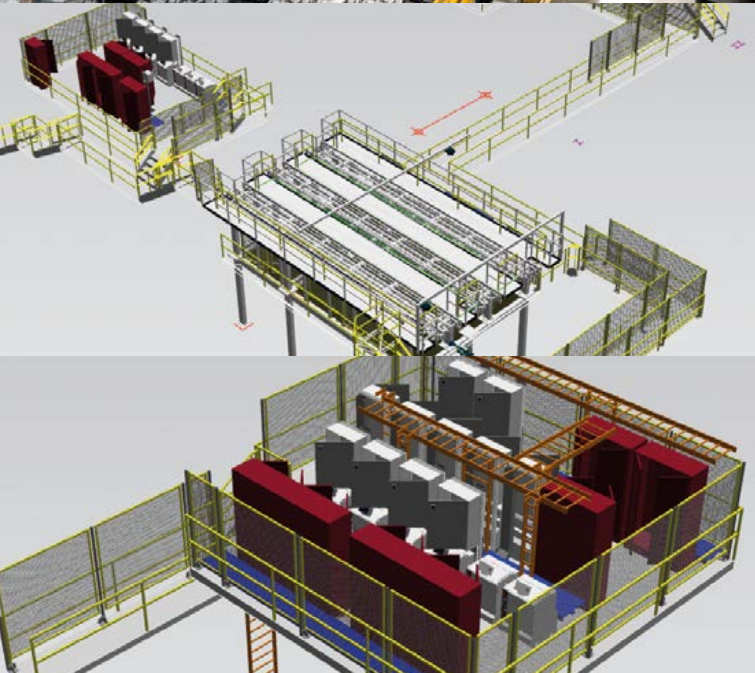
Mark Greatrix, Associate Director, has been working closely with the University to secure the funding, he said: “As our Research and Development team continues to move from strength to strength, this funding will allow us to continue progressing our capability in the market, as well as purchase more equipment, which will enhance the Innovate UK funded work, which started in November last year.

“Working collaboratively with The University of Huddersfield, we will be testing, developing and improving workflows in the application of UAV technology over the coming months.”

Professor Song Wu, from The University of Huddersfield added: “Waldeck are a digitally-led consultancy and have extensive capabilities in relation to digital reality capture, so as the construction industry continues its transformation to becoming more digitally-focused, we are excited to share our expertise and work collaboratively to support future developments and further research in this industry and field.”



CASE STUDY: ADI AUTOMOTIVE



PROJECT OVERVIEW

ADI Automotive specialise in the provision of bespoke mechanical and electrical installations to the Automotive industry, including assembly machinery, integrated automation systems, robot installations, platforms, trackside process equipment and overhead support systems.

SERVICES PROVIDED BY WALDECK

Waldeck has been able to assist ADI in numerous projects for various end user and prestigious automotive manufacturers, across the country, by providing civil and structural engineering knowledge to complement ADI's own in-house project delivery expertise.

Some of these projects include:

- Floor Mounted Andron Installation
- Engine Block Lifting Plate Design
- Modification to Door Lifter Frames
- Modular Pipe Support Design
- Structural Reviews

OUR SOLUTION

Each new project poses new challenges, in terms of loading, access and safe construction. Working closely with ADI Automotive to determine the best and most practical solution. Waldeck has been able to reduce installation time and as a consequence also reduce costs to the client, by creating efficient and economic solutions.

Waldeck's vast 20+ years' experience within the automotive industry has given us a unique insight into the main client driven requirements that each project possesses. This has enabled us to be able to provide feasible and practical solutions that meet the clients requirements first time and on-time.

As with any project, there's always lessons learnt, and we feel, early contact with the various stakeholders involved in these type of project is invaluable, as it allows us to quickly identify the key performance criteria that will inevitably dictate the form and design of a project.

TESTIMONIAL

"We have been working with Waldeck for many years now and the service they have provided has been seamless throughout, their understanding of us as a client has continued to grow and grow, and we look forward to continuing our collaborative working relationship in the future."

*Duncan Honeysett, Mechanical Operations Director
ADI Automotive*

LINCOLN TRANSPORT HUB NEARS COMPLETION

The Lincoln Transport Hub is a £30 million regeneration scheme, which will transform Lincoln City Centre – providing a state-of-the-art bus station, 1,000 space multi-storey car park, retail space and a new pedestrian plaza.

Led by City of Lincoln Council, the scheme will also see improvements to Lincoln Central railway station and create a more accessible and attractive gateway to the city.

Our engineers have been involved in the project for almost four years now, following the need to redraw the scheme masterplan in late December 2015.

Working in collaboration with Willmott Dixon and John Roberts Architects, a new proposal was prepared, considered and accepted by City of Lincoln Council in early January 2016.

Steve Hall, Operations Director at Waldeck, said: “The realignment of the existing highways was critical to the scheme and was made more complicated by the presence of a culverted watercourse that bisected the site.

“On approval of the revised masterplan, the scheme was

developed alongside numerous stakeholders and end users to enable a planning application to be submitted and for construction to commence in autumn 2016.

The scheme has received £11 million funding from the Department for Transport (DfT), along with a further £2 million from the Greater Lincolnshire Local Enterprise Partnership (GLLEP).

Steve, continued: “Having been involved in this project for some years now, it’s a great achievement to see it all taking shape, with the project coming to final completion in the not so distant future.”

Peter Owen, Managing Director of Willmott Dixon in the Midlands, said: “This is a fantastic scheme to be part of, transforming the city centre of Lincoln and creating new modern facilities for local people while encouraging new visitors to the city centre.”

The City of Lincoln Council are working closely to its partners – the DfT, the GLLEP, Lincolnshire Co-op, Network Rail, Lincolnshire County Council and East Midlands Trains – to deliver the scheme by February 2018, which will see the opening of the new bus station.





CASE STUDY: WCS INDEPENDENT LIVING CARE SCHEME

Waldeck is working in collaboration with WCS Care to deliver a £43.3 million Independent Living and Care Scheme in Warwickshire.

The scheme started in June 2017 and is set for completion in December 2022.

PROJECT OVERVIEW

These schemes are within the West Midlands region and range from three units up to 100 unit schemes.

The schemes are built with the following forms of contract:

- **JCT Design and Build**
- **JCT Minor Works**
- **JCT Intermediate with Design**

SERVICES PROVIDED BY WALDECK

Waldeck’s services will cover WCS Care’s development and refurbishment programme. This programme consists of over 400 units new build units over five years and a refurbishment and extension programme of 30 units.

These combined schemes have a new build value of £40 million and a refurbishment value of £2.5 million.

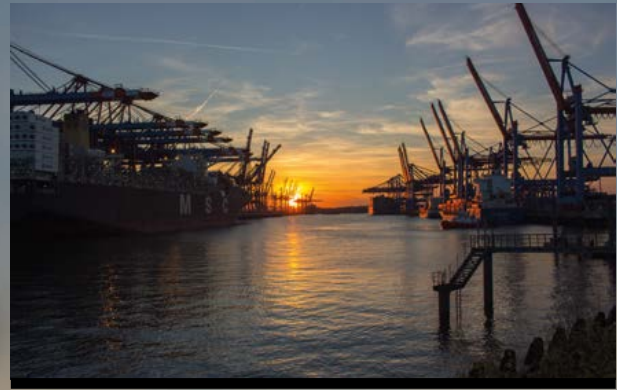
We are also working on a new build office development for 30 staff under a land and build development agreement with a value of £800,000.

Waldeck will be providing the following Pre and Post Contract services:

- **Project Management**
- **Programme Management**
- **Specification and Design Brief Production**
- **Contract Administration**
- **Employers Agent**
- **Quantity Surveying**
- **CDM Services**
- **Clerk of Works**

TESTIMONIAL

“Waldeck has offered a very responsive service and are very knowledgeable of us as a client and understand our needs and aspirations. We look forward to growing this relationship in the future.”



APPOINTED ON THE INDUSTRY FOUNDATION CLASSES (IFC) FOR MARINE WORKS

Waldeck has been appointed onto the Industry Foundation Classes (IFC, to develop the standards for harbour, ports and waterway infrastructure.

Working in collaboration with Cardiff University and China Communications Construction Company (CCCC), the project will run over two years, developing the IFC in accordance with the BuildingSMART International Standards Process.

As expert panel members, Waldeck will be reviewing, commenting, discussing and advising the project team on the development of the IFC standards and the final deliverables.

Mark Greatrix, Associate Director and Lead BIM Consultant, said: “Industry Foundation Classes (IFC) comprise of a global standard, which is used to describe, share and exchange construction and facilities management information.

“This project will ensure that assets specific to the ports and harbour industry will be relevant throughout the entire lifecycle, and the legacy data will not become out-dated or un-usable, as is regularly seen at present.”

In order to carry out this project, Waldeck has established a suitable team of experts, who will be involved in the testing and development of IFC.

Mark added: “Being involved with the development of open IFC for ports and harbour data structure, we are further demonstrating Waldeck’s commitment to open BIM, collaboration and our drive for industry-wide improvement through research and development.

“Working on open BIM standards, not only supports our digital aspirations, but also facilitates collaborative improvements across the industry and benefits our many clients across this sector.”

This project came about following a preliminary research project, between Cardiff University and China Communications Construction Company.

OUR PEOPLE

SPECIALIST APPOINTED THROUGH INNOVATE UK KNOWLEDGE TRANSFER PARTNERSHIP

Digital Capture and BIM Integration Specialist, Clara Osuna has joined Waldeck, as part of our recent Innovate UK funding through the Knowledge Transfer Partnership (KTP) project.

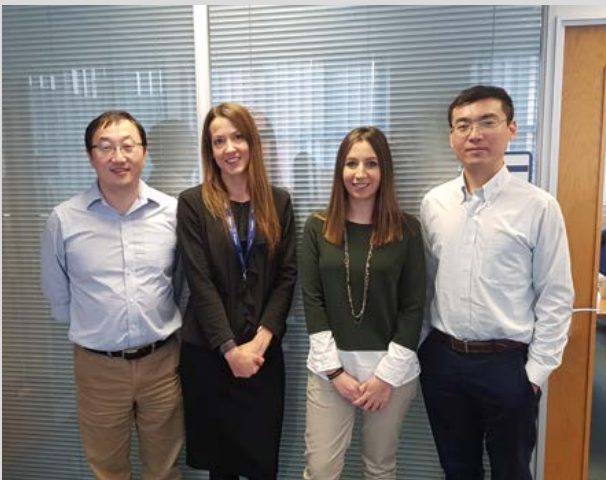
Working in partnership with the University of Huddersfield, the funding was awarded in April last year, to further expand Waldeck's Research and Development (R&D) capability.

Clara will be based full time at our Head Office in Lincolnshire, where she will work closely with other members of the R&D team, supporting and undertaking research to further develop Waldeck's digital reality capture capability.

Clara will be part of a focussed team to develop a solution that enables the digital capture of existing and new build assets, whilst also facilitating automation of model elements from within the data capture.

Mark Greatrix, Associate Director, said: "We are delighted to be welcoming Clara to the team, her skills and passion for BIM and digital capture means she will be a great asset to the team.

"Clara will be actively interfacing with our digital data capture team whilst also working collaboratively with experts from the University of Huddersfield, to not only grow our digital capture offering, but also to develop her own understanding of the subject."



NEWARK OFFICE WELCOMES NEW BUSINESS UNIT DIRECTOR

Waldeck has appointed a new Business Unit Director – Nataraj Saha, who will oversee the multi-disciplinary team in our Newark office.

Saha is a highly experience Chartered Civil Engineer and member of the Institute of Civil Engineers (ICE) and will focus on leading our multi-disciplinary teams, working on major infrastructure projects and further company growth.

Saha boasts more than 24 years' experience leading teams, working on multi-national, public and private sector projects, in client, consultant and contractor roles, within competitive and challenging working environments.

Over the years, Saha has gained significant international project experience in Asia, the South-East, Middle East and Europe, taking on a variety of roles, including managing design offices, construction support and governance roles with various workshare offices in leading positions.

Saha, newly appointed Newark Business Unit Director, said: "I am delighted to be joining Waldeck, at such a significant time, and I am looking forward to further enhancing the company's business offering and reputation across a range of sectors."

Steve Hall, Operations Director, based in Newark, said: "Saha will be a great asset to the team here in Newark, with his engineering experience across worldwide projects. We look forward to enhancing our current commercial technical expertise further.

"I'd like to take this opportunity to welcome Saha and I look forward to working with him in the future."

NEW DIRECTOR APPOINTED FOR NEXT PHASE OF GROWTH

Mike Driscoll, with over 30 years top level experience in commercial management and work winning, joins Waldeck to help support the business growth team in expanding Waldeck's market position across the sectors.

Mike brings considerable expertise in winning and managing successful outcomes on complex projects within the construction and building services industries, having specialised in heavy infrastructure, energy and renewables, to name a few.

Joining Waldeck at a significant time, Mike will be an integral part of driving the next phase of Waldeck's business growth strategy forward in 2018.

Mike Driscoll, newly appointed Director at Waldeck, said: "I am delighted to be taking on this new challenge and look forward to working closely with the rest of the team on the next phase of Waldeck's exciting growth plans.

"Whilst I am based out of Waldeck's Birmingham office, I will have a national remit in order to develop relationships with new and existing clients, through Waldeck's leading multi-disciplinary engineering and technologies offering. It is fantastic to see that the company has such a large compliment of blue-chip clients that it has worked with, and I am sure that there is much more that we can offer them, especially on the niche digital solutions that Waldeck has developed."



Paul Waldeck, CEO and Founder, said: "With a highly respected reputation in the market, I am confident that Mike will create significant value for the business and enhance our already successful, business growth team.

"His strong background in commercial management and work-winning has arrived at an opportune time for Waldeck, as we head into the new year with a strong pipeline of projects ahead of us.

"Mike firmly believes in creating and sustaining lasting relationships, and I am certain he will work closely with the team to deliver a very positive customer experience and I wish Mike well in his role, and look forward to working with him on many exciting opportunities."

WALDECK SUPPORTS GOVERNMENT BACKED CAMPAIGN TO INSPIRE FUTURE ENGINEERS

Waldeck has pledged support for a national campaign to get more people into engineering, with a focus on the digital capabilities the industry has to offer, in an attempt to fill a major skills shortage.

2018 is the Year of Engineering, which launches this month and will see government work with hundreds of businesses to raise the profile of engineering among young people, their parents and their teachers.

This will include offering at least a million direct experiences of engineering to young people from all backgrounds – from behind the scenes tours and family days out, to school visits and the chance to meet engineering role models.

With the Year of Engineering officially underway, engineers and organisations across the country are marking the launch by celebrating the positive impact of engineering – from creating smart cities, through leveraging artificial intelligence and machine learning technologies to turning a 3D model of a building into a virtual reality

With the Year of Engineering officially underway, engineers and organisations across the country are marking the launch by celebrating the positive impact of engineering – from creating smart cities, through leveraging artificial intelligence and machine learning technologies to turning a 3D model of a building into a virtual reality.

The campaign is aiming to showcase the creativity and innovation of engineering careers, to widen the pool of young people who consider the profession, as presently it is 91% male and 94% white.

Waldeck will be supporting the campaign by inspiring young people, through the sharing of stories, challenges and opportunities from our very own engineers and graduate engineers.

Steve Hall, Operations Director, said: “As a company, we are committed to the education, training and development of graduates and young people, supporting and inspiring them to build a career within engineering, construction and digital design.

“In the face of the skills gap, we have established an annual Graduate Training Scheme, which has been running for two years now, in order to grow our own talent and make them fit for the work place, so the news of this year-long government campaign to support the skills shortage is great for the UK’s most productive sector.”

The Year of Engineering officially launches on Monday 15th January, to find out more, visit the Year of Engineering partner website and keep an eye out for our stories to #InspireAnEngineer.

2018. THE YEAR OF



SHEFFIELD EMPLOYEE RECEIVES DISTINCTION IN MASTERS DEGREE

Rachel Shaw, Senior Electrical and Lighting Design Engineer based in our Sheffield office, has successfully completed her Master's degree in Light and Lighting, finishing with a distinction.

The course, which was completed over a two years, included the following modules:

- **Lighting Fundamentals**
- **Lighting Research**
- **Lighting Practice**
- **Lighting: Applied Calculations**
- **Advanced Lighting Design**

Rachel Shaw, said: "I have been at Waldeck for five years now, and being given the chance to further my career through this master's degree has been fantastic."

As part of the course, Rachel completed a 15,000 word research project, titled 'Climate-based Daylight Modelling: Achieving the Users' Requirements'.

The dissertation focused on answering the question; 'Are current daylight recommendations, based upon Climate Based Daylight Modelling, providing the users' daylight needs for teaching and learning spaces in new schools?'

Rachel explained how her work at Waldeck helped her to complete her dissertation: "At Waldeck, I have been involved in producing daylight designs for a number of new schools, this was a huge help when completing my dissertation.

"I was able to obtain many perspectives, including that of the publishers of the current guidance documents, experts in the field and of the teachers."

Andy Inkson, Business Unit Director for Sheffield, said: "Rachel has worked tremendously hard to complete this course, so the distinction she received is thoroughly deserved.

"Rachel is a significantly important member of the Mechanical and Electrical team in Sheffield and through the knowledge learnt from completing this course, it has greatly improved her understanding of daylight design in schools, overall enhancing our service to our clients."



WALDECK BIM MANAGER DELIVERS BIM LEVEL 2 TALK AT INSTITUTION LECTURE

Waldeck BIM Manager, Martin Cheung, delivered a talk on Building Information Modelling (BIM) Level 2, as part of an Institution of Civil Engineers (ICE) lecture at the University of Derby.

Martin, who is also an Associate Lecturer at the university, delivered the presentation in partnership with Programme Leader for BSc and MSc Architectural Programme, Dr Boris Ceranic.

The lecture covered:

- **The importance of BIM at every stage of a project**
- **The importance of BIM at every project stage**
- **General learning outcomes**
- **Integrating all disciplines within the collaborative working environment**

The lecture, organised by the ICE Graduates and Students Committee, aimed to widen the audiences' knowledge through real project experience.

TECHNOLOGIES TALK DELIVERED AT OXFORD BROOKES CONFERENCE

Specialists at Waldeck delivered a talk on technological advances in the construction industry, at a conference, organised by Oxford Brookes University.

'Proptech', which took place in November last year, was aimed at future experts, who currently study; Real Estate, Construction, Planning and Architecture.

Students heard from speakers across a variety of disciplines, about how technology is changing the way we work, and how the future of such technology will continue to streamline and enhance our ways of working.

Mark Greatrix, Associate Director at Waldeck who delivered the talk alongside colleague, Veronica Ruby, said: "Having taken the lead on Research and Development at Waldeck, it's great to be have been given this opportunity to share insights into our world of 'technologies', with experts and students from the university.

"The Waldeck offering, encompasses a cross-section of technologies, which are the future of the industry, including drone reality capture, virtual reality, terrestrial scanning and mobile tech, to name a few."

The event was opened with a panel discussion, led by Estates Gazette, and also saw representatives from KMPG and CBRE.



WALDECK DOUBLE EXPECTED DONATIONS IN MEMORY OF FORMER EMPLOYEE

Six members of the Waldeck team, joined over 100 other cyclists testing their fitness and stamina by cycling 100 miles around Warwickshire, raising money for charity.

In September last year, the team took on the challenge raising two thousand pounds for St Luke's Hospice, Sheffield, in memory of former Waldeck employee, Ged Smith.

Ged, who was Director of Digital Design, worked with us for five years' before sadly passing away in 2017 from a long-term illness.

Adam Machan, Craig Harrison, Jack Kennedy, Mark Greatrix, Phil Walker and Scott Harrison all took part in the challenge, which took just under seven hours to complete.

Paul Waldeck, Founder and CEO, said: "I am extremely proud of the team for not only completing the gruelling challenge of cycling 100 miles, but also raising a massive amount of money for such a worthy cause, which is very close to our hearts."

Jack Kidder, St Luke's Corporate Fundraising Manager, said: "We are so pleased that the Waldeck team, having seen first-hand what our work means for our patients and their families, chose to support in this way."

The cycle challenge, which has been running for the past eight years was organised by Prologis, who are the UK's leading developer and owner of logistics property.



WINNERS AT LINCOLNSHIRE BUSINESS AWARDS

Waldeck were winners at the Lincolnshire Media Business Awards, before Christmas, achieving the Education, Training and Skills Award for our on-going Graduate Training Scheme.

The audience included almost 500 representatives from businesses of all shapes and sizes. The event, which celebrated the success of employees, apprenticeships, new start-ups and large businesses was the largest in the awards history.

Soccer AM presenter, Lloyd Griffith hosted the event in which the winners of 14 awards were announced at the ceremony, which took place at the Epic Centre at Lincolnshire Showground.

Veronica Ruby, Head of Training and Development, collected the award on behalf of the company with Steve Hall, Operations Director, who shared: "Lots of businesses struggle to find the right talent out there. We have to grow our own talent and make them fit for the work place, which is what we do through our Graduate Training Scheme."

The judges of the award, sponsored by the University of Lincoln, said: "In the face of a skills gap Waldeck have established an impressive track record of growing their own talent."

Veronica Ruby, Head of Training and Development later added: "It is great to be recognised locally for our Graduate Training Scheme, which attracts graduates from across Europe.

"We are delighted to welcome our second cohort of graduates this month, who will be based across four of our offices; Sleaford, Sheffield, Peterborough and Newark, within our multi-disciplinary design teams.

"There will be a huge focus on collaboration, as they are embedded into our digital way of working."

Other winners from the evening included Root2 Recruitment Ltd, who were crowned the Small Medium Business of the Year, Curves, who clinched the much-sought after Heart of the Community Award and Micronclean Ltd, who were honoured with the Large Business of the Year Award.

COLLABORATIVE WORKING LEADERSHIP RECOGNISED AT CIBSE AWARDS

Waldeck's Sheffield team picked up the 'Collaborative Working Partnership' prize at the CIBSE Yorkshire Awards in November last year for our collaborative approach to project delivery with long-standing car manufacturing client.

Waldeck were appointed on the project, to provide multi-disciplinary Building Information Modelling (BIM) coordinated consultant design services, for a warehouse extension, amenity mezzanine, ground floor staff entrance and amenities, and new transport office at the clients' existing site.

Andy Inkson, Sheffield Business Unit Director, said: "It's the second year we have been in the running for a CIBSE Yorkshire award and I am thrilled to be able to say we have won once again.

"This award not only recognises the great collaborative working relationship we have with our client, but it also recognises the hard work of the team, so for that, I would like to congratulate the Waldeck team on promoting a collaborative working approach throughout the business."

CIBSE Yorkshire Chairman, Simon Owen, said: "Creating a legacy is crucial for us and we all wanted to ensure the widest and most positive outcomes for those involved, the industry and wider community.

"The aim was also to build upon lessons learned from last year and it appears it wasn't just us; the competition was very close in all of the categories, with the judges commenting that many of the entrants that entered again after last year, had taken their feedback and used it to good effect."

The awards, held at the Royal Armouries in Leeds, ran for the second year in 2017, hosting nearly 400 people from across the industry, celebrating the good work by Yorkshire based organisations, whilst also recognising the next generation of industry professionals."



GENERAL ENQUIRIES

Contact: Charlotte Watson
enquiries@waldeckconsulting.com
Telephone: 08450 990285

DIGITAL TWIN SOLUTIONS ENQUIRIES

Contact: Paul Waldeck
paul.waldeck@waldeckconsulting.com
Telephone: 08450 990285

SALES ENQUIRIES / PR & MEDIA

Contact: Hannah Wharton
hannah.wharton@waldeckconsulting.com
Telephone: 01529 298055

CAREER OPPORTUNITIES

Contact: Debs Newbery
debs.newbery@waldeckconsulting.com
Telephone: 08450 990285

www.waldeckconsulting.com

