

# INSIGHT

**Waldeck backed by government  
to become a world leader in progressive**

## **‘Digital Twin’ Solutions**

---

**Waldeck drive forward  
world-class technologies  
through Smart Enterprises**

---

**Waldeck lead from  
the top with a  
collaborative approach**



Waldeck backed by government  
to become a world leader in progressive

# 'Digital Twin' Solutions





**Technical and risk management specialist, Waldeck Consulting, has been backed by the British government to further develop our game-changing solution, which enables the 'live' digital comparison of an asset during construction, against the client's 3D design model.**

Waldeck use a blend of specialist hardware and software, such as enhanced aerial drones, photogrammetry, and laser scanning.

We also have access to satellite data to capture, analyse and meaningfully assemble the relevant data to be fit for purpose to undertake live model comparisons.

We can monitor and record 'live' construction progress of specific assets as they are being constructed or assembled on-site, identifying non-compliances against design to give early warnings and timely, efficient remediation opportunities.

Importantly, automatic progress against time schedule and quantity of work undertaken can be rapidly created to enable commercial position to be accurately defined in terms of progress and valuation of work.

Scenario modelling can also be undertaken to assess acceleration of works or predictive modelling for 'option-eering' to optimise methodologies, safety, quality, programme and costs for both permanent and temporary works.

With the ability to also progressively survey and capture data from the asset after the construction phase, and for its entire lifecycle, Waldeck can maintain and optimise a Digital Twin as part of the whole enterprise.

With this assembled and integrated solution being a first, the government recognise the need for innovation to maintain the UK's reputation as a world leader in R&D.

Such new advances from these technologies, which have been self-funded by Waldeck in recent years and now, thanks to the government's funding will be developed further, through a two-year collaboration with the University of Huddersfield.

Innovate UK, the government agency involved, have awarded Waldeck a £120k to boost the company's in-house digital-focussed Research and Development (R&D) team.

Spread over a two year programme of work, the award will also support the employment of a Knowledge Transfer Partnership (KTP) Associate, who will be embedded into Waldeck's R&D team to support and undertake research, developing and enhancing our drone capability within our iCapture4Modelling service.

“

**We first established our Unmanned Aerial Vehicle (UAV) digital surveying and asset capture offering over a year ago, and this latest boost allows us to enhance our strategic alliance with the university further.**

Following a rigorous application, review process and detailed programme plan, the project team are able to quickly enhance their service offering of digital capture, digital re-processing and alignment with the overall Digital Twin Solutions in terms of 'Reality Computing' which integrates both digital and physical worlds.

Paul Waldeck, Founder and Director said: "We have invested heavily in R&D for several years now, creating solutions using a number of proven digital technologies that will provide holistic project lifecycle benefits for our clients and it is with thanks to this funding that we can enhance our capability and expand our offering further. We are an innovative nation and it is fantastic that government is backing bright ideas that not only have a future but will be the future.

"We started working with the University of Huddersfield when we first established our Unmanned Aerial Vehicle (UAV) digital surveying and asset capture offering over a year ago, and this latest boost allows us to enhance our strategic alliance with the university further."

Dr Song Wu, Professor of Surveying and IT, at the University of Huddersfield, said: "It's great news to hear of the award and we are extremely excited to continue our collaboration with Waldeck and look forward to delivering the project's objectives once the KTP Associate assumes the role."

Recruitment is scheduled to start in May with the hope of the right candidate starting within the team in the summer.

**If you hold a degree in either engineering, surveying or built environment with a passion for digital innovation and technology and would be interested in being considered for the KTP Associate position, please contact Janet Shrapel on 08450 990285 for more information.**

# Waldeck lead from the top with collaborative approach



“

Collaborative working is second nature to us here at Waldeck and we pride ourselves to ensure that we are aligned internally and externally.

**As we continue to work closely with clients such as EDF and Cavendish Nuclear, we understand the importance of a mutually beneficial, value added working relationship that has an honest, collaborative approach enhancing competitiveness and performance for all.**

With collaboration a key driver within the business, key members of the senior management team, including Paul Waldeck, Founder and Director, Sue Wright, Deputy Managing Director, and Andrew Dent, Director of Clients and Markets, have recently been awarded Member status of the Institute for Collaborative Working (ICW).

This membership allows us to further enhance our best practises for a collaborative ethos which is embedded throughout the business.

Recognising communication is key in any business, we enhance our concerted approach, by utilising a variety of solutions, internally and externally, saving time and money, and increasing productivity in the workplace.

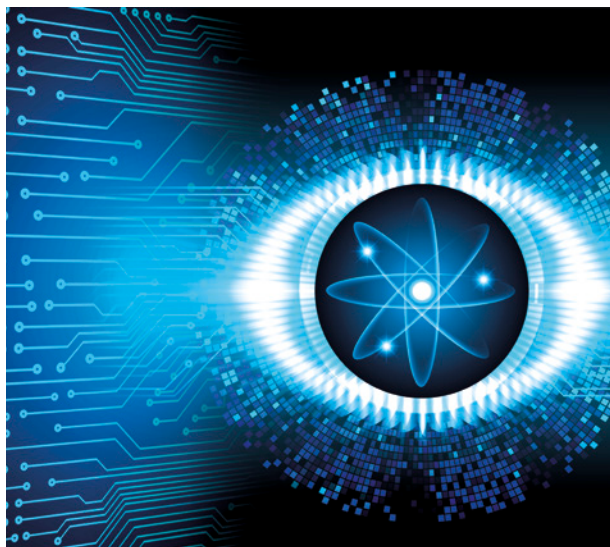
Collaborative working provides many benefits for our employees and our clients, including:

- Innovation Sharing
- Cost and time savings
- More informed decision making
- Effective co-ordination between teams
- Optimised Safety and Quality

Paul Waldeck, said: “Collaborative working is second nature to us here at Waldeck and we pride ourselves to ensure that we are aligned internally with our colleagues and externally with our clients, which in turn, ensures delivery of highly effective solutions and un-compromised advice to the exceptional standards of safety and quality that our clients and their market demand.”

“Owing to our commitment to collaborative working, I am delighted to have been awarded Member status for Institute for Collaborative Working, and I look forward to developing even more collaborative working best practices going forward, learning from other industry leaders.

Established in 1990, the Institute for Collaborative Working (ICW) is the best practice leader for Collaborative Working. ICW is focussed on establishing collaborative working as a professional business discipline and help organisations, large and small, in both private and public sectors, to build and develop effective competitive business relationships based on the very best behaviours.



## Waldeck join forces with Nuclear Institute and other members to form Digital Special Interest Group

**Waldeck has teamed up with the Nuclear Institute and other members to launch a Digital Special Interest Group (N-DigitalSIG), in partnership with the National Nuclear Laboratory, Sunbeam Management Solutions Ltd and Knowledge Transfer Network (KTN).**

The group has been established on behalf of the nuclear industry to help develop a best practice digital community.

The vision is to continually evolve the best way of working through enhanced knowledge sharing within the sector and also from other sectors.

As Tier 2 Suppliers to the Decommissioning, Defence, SMR and Nuclear New Build sectors, Waldeck will play a very active role in the group providing strategic and technical Digital/BIM opinion and advice.

The inaugural meeting took place in February where the group set out their first focus point, which will be to respond to the Government's Industrial Strategy document to be released in April in which both Nuclear and Digital are two of the five key drivers for UK plc.

Sue Hewish, Waldeck's Nuclear Director, said: "Waldeck is delighted to join other industry experts in shaping and enhancing the digital future of the nuclear industry and we look forward to working with the groups' partners to support the local UK and wider international nuclear community."

Membership to the N-DigitalSIG will be open to the following:

- Nuclear Decommissioning Authority (NDA)
- Nuclear Site Licensed (Tier 1) Companies
- Nuclear New Build Developers
- Nuclear Fusion Organisations
- Nuclear Defence Organisations
- NI Member Companies

## Waldeck expand offering on National Nuclear Business Services Framework

**Following our recent announcement that we have been accepted as a pre-qualified supplier on to the Low Level Waste Repository (LLWR) Business Services Marketplace, under the 'Engineering' category, we are pleased to announce that we have expanded our offering, and have been accepted onto the following additional categories:**

- Business (Change Management/Business Cases /Technical Authors)
- Portfolio, Programme and Project Management
- Programme Controls (Planning/Estimating/Cost/Risk Management)
- Security (Advice/Consultancy/Specialists)

Paul Waldeck, Founder and Director, said: "We are currently working on some of the largest nuclear new build, power and decommissioning projects in the world, offering BIM based Enterprise Lifecycle Management (ELM) Solutions, Civil and Structural Engineering Design, Project Controls, temporary Works Co-ordination, Configuration Management, to name a few.

"Alongside our core team of specialists working on these projects, we have the provision of elite consultancy services from Waldeck Nuclear Associates, some of whom have held the most senior positions in the UK regulatory systems, Government and nuclear industry, generally.

"Owing to this combination, we are delighted to be accepted on to a further four more categories in the LLWR Business Services Marketplace and look forward to collaborating with NDA companies in the not so distant future."

This simplified contracting route, administered by LLWR on behalf of the Nuclear Decommissioning Authority (NDA) Shared Services Alliance, provides a procurement portal for a range of services, which helps to streamline the process of acquiring specialist support for organisations such as Magnox Ltd, National Nuclear Laboratory and Sellafield Ltd.





## Waldeck's digital surveying capabilities reach new levels

### DIGITAL SUB-SEA SURVEYING TO BIM

**Waldeck have developed a new digital sub-sea monitoring product and risk management solution for the Ports & Maritime and the Offshore Oil & Gas industry.**

This offering is primarily comprised of an integrated blend of 3D Laser Scanning, Photogrammetry and Hydrographic Surveying assembled and rationalised through our offshore solutions capability within our Digital Twin offering. This provides a safe, cost effective solution to our clients' problems, while maintaining industry-leading procedures and processes.

To obtain the best results for our clients, Waldeck ensure our experts have a clear understanding of the project and its requirements from the point of consultation.

Waldeck are able to offer clients this sub-sea surveying method, which includes services such as:

- Existing structure surveys
- Seabed and sub-seabed surveys
- As-Built documentation
- Deformation monitoring
- Pre and post development sub-sea surveys
- Large scale sub-sea surveys
- Detailed ground models for use in Flood Risk Assessments
- Difficult, restricted or potentially dangerous environments

Through the efficient combination of these proven digital technologies and new capabilities, we are able to provide solutions for sub-sea surveys throughout the lifecycle of a project, providing a number of benefits for clients, including: low cost solution, fast data capture, time and cost savings and complete site coverage.

### DIGITAL SUB-SURFACE SURVEYING TO BIM

**As the construction industry continues to develop, particularly in its digital advances, Waldeck have embraced the latest 3D survey, digital capture methodologies and techniques, enabling us to offer a total digital-based surveying and validation method for our clients, ensuring compliance with PAS:128.**

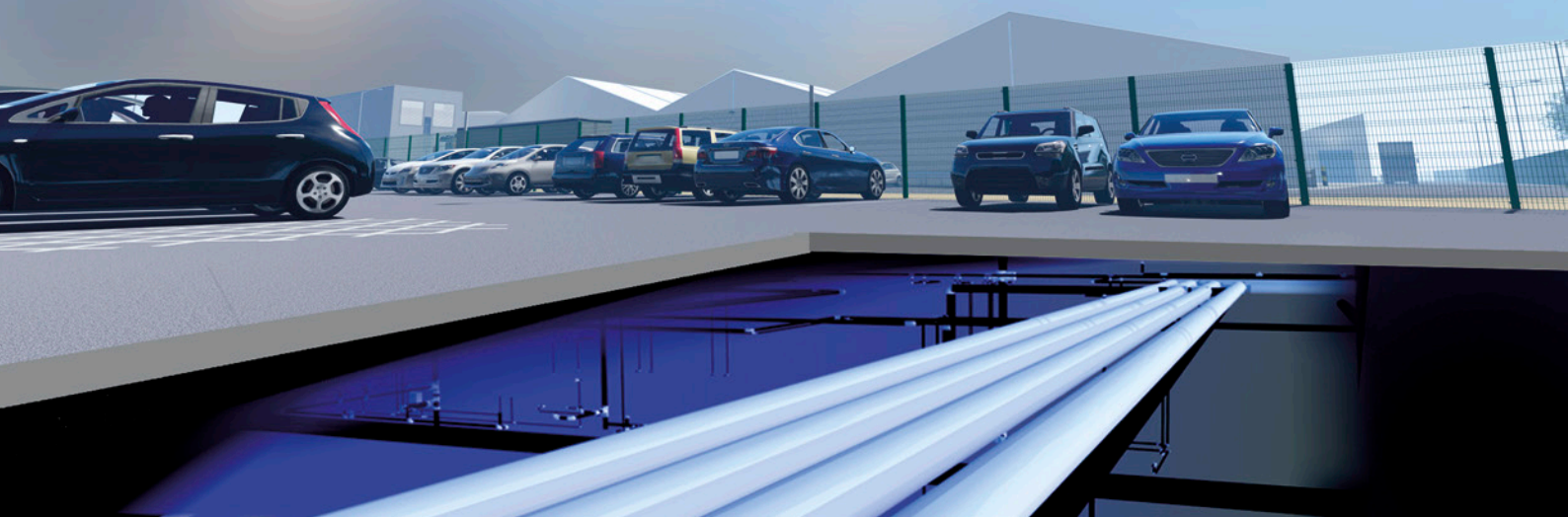
Aligning Photogrammetry and Point Cloud solutions with PAS:128, we are creating a recognised level of methodology, accuracy and accountability, which provides precise and comprehensive information for our clients.

This offering is primarily comprised of advanced Photogrammetry, 3D Laser Scanning, Electromagnetic Locators (EML) and Ground Penetrating Radar (GPR).

Through the efficient combination of proven digital technologies and new capabilities, Waldeck are able to offer clients this digital sub-surface surveying method, which includes services such as:

- Record data models
- Digital validation through 3D laser scanning and photogrammetry
- Accurate build-up of the sub-surface using GPR and EML
- Pre and post development sub-surface surveys
- Federated geospatially coordinated 3D model output

Adopting Photogrammetry and 3D laser scanning in line with the traditional sub-surface surveying methods; EML and GPR, creates considerable benefits, which include: Health and Safety and CDM compliance, reduced risk, 'Intelligent Customer' status improved, less construction risk through reduced unknowns, better and more informed design solutions, leading to time and cost savings too.





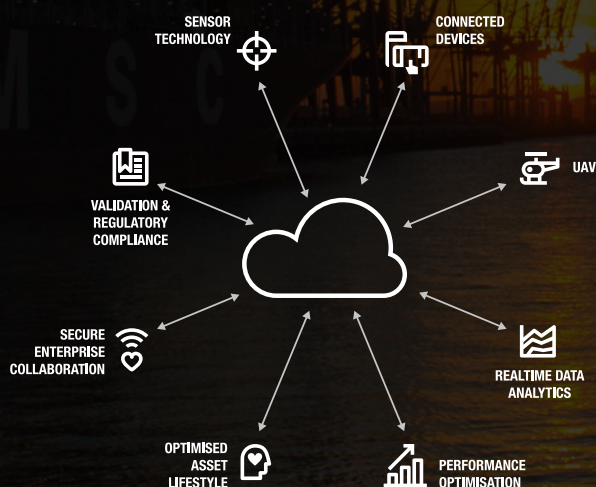
# Waldeck drive forward world-class technologies through Smart Enterprises

Specialising in delivering high-quality expertise in design management and execution of all types of construction and manufacturing facilities, Waldeck are inspired by the concept, Industry 4.0.

At the heart of Industry 4.0 will be Smart Enterprises; organisations that utilise the latest digital technology in their internal and external operations, to ensure efficient, cost effective and high-quality running of projects.

The integration of this concept will continue to become more and more influential in allowing organisations to leverage new technologies which permits them to completely re-imagine their business model and enhance their processes.

With this, Waldeck have been promoting digital-based strategy solutions as a core service for several years now, and are continuing to keep ahead of the curve to create efficient and cost-effective solutions for our clients, through the concept of implementing: Smart Ports, Smart Factories, Smart Rail Depots, Smart Buildings and Smart Energy and Nuclear.



## SMART PORTS

By combining our experience as market leaders in the field of digital information modelling and digital strategy with real world ports experience, Waldeck are able to take a strategic level viewpoint in order to develop Smart Port's for clients. From the outset, our approach is to establish a technology map for the data and analysis systems of the project, around which the communications and physical infrastructure is developed.

## SMART FACTORIES

Our expert knowledge of the manufacturing sector combined with our digital strategy based solutions, ensures we are driving efficiency and lowering operational costs for our clients projects through our drive of innovation.

Our commitment to collaborative open standards will be crucial to supporting Smart Factories where connected production systems will communicate with the design and models to facilitate an automated manufacturing process, breaking the existing technology boundaries and working with global leaders in their fields.

## SMART RAIL DEPOTS

Our niche digital offering enables the systems within a rail depot to be interlinked digitally and therefore communicate effectively in order to deliver the 'Digital Railway' goal of accelerating the digital modernisation of the railway network.

Waldeck are able to map and digitise information from trains, stations, depots and networks enabling all elements of rail infrastructure to talk to each other and feed into one central automated system. This enhanced intelligence and communication means that processes are more efficient, resulting in more trains being on the tracks, better connections and greater reliability.

## SMART BUILDINGS

At Waldeck we understand that every client's needs are different, and fulfilling operational and asset information requirements provides the best method for delivering success.

Smart Buildings encapsulate digital intelligence and connected technologies to automate functions & controls, and provide real-time data analytics. At Waldeck we understand the benefits of harnessing future technologies to capture efficiency and data from buildings and connected cities.

## SMART ENERGY AND NUCLEAR

Energy efficiency is not a new concern. The optimisation of energy is fundamental to smart energy solutions, and can be achieved through a range of measures to enhance new build strategies or overhaul existing solutions.

The strategic development of Smart Infrastructure and associated intelligent assets is fundamental to the implementation and ongoing success of smart energy solutions. Digitally connected plant, process and infrastructure enables performance based analysis and optimisation facilitating efficiencies across the assets entire lifecycle.



“

Waldeck possess the experience and expertise in the design, development and construction of modular construction solutions.

## Waldeck's BIM based Design for Manufacture Assembly and Mechanical and Electrical solution

**With Waldeck's continued investment in Building Information Modelling (BIM), we have access to all of the cutting edge BIM design and collaboration software, making accessible to our clients the offering of BIM based Design for Manufacture Assembly and Mechanical and Electrical solutions.**

Having worked with leading names in the industry, we have a wealth of experience and knowledge in providing structural design and detailing services to the structural precast and pre-stressed concrete fabrication industry, positioning us as recognised market leaders, delivering to client's expectations.

Waldeck possess the experience and expertise in the design, development and construction of modular construction solutions, combined with fully coordinated structural solutions, embedded M&E elements and builders work apertures which means we can utilise many forms of modular building solutions in order to deliver key benefits to the construction industry.

As a result, this positions us uniquely in offering digital based solutions for Projects in the production of pre-cast concrete fabrication panel drawings for any modular provider, combined with fully digitally co-ordinated, embedded M&E elements and builders work apertures.

Waldeck have extensive experience working on a large number of new build and refurbishment schemes on prison ancillary buildings such as workshops, reception unit, first night centres, control rooms, education blocks, administration buildings, visitors' centres, gatehouses, visits halls, sports and gymnasium facilities, sub-station and generators, segregation

blocks, heating replacements, alarm replacements, perimeter security upgrades and healthcare facilities.

With this experience, we know how MoJ projects are undertaken and their development from property paper stage, through the IPP stage, DPP stage, AMP Stage, PCA, CA and Construction phase, right up to the MoJ's very specific handover process.

From our direct experience of the design of pre-cast custodial accommodation facilities, the ability to digitally transfer building services systems onto pre-cast concrete fabrication panels, without the need to do this 'by hand' would be of extreme benefit in respect of time, cost and more notably the almost total removal of 'human error' in the transfer of information.

This experience in DfMA and M&E, aligned with our in-house use of BIM based Enterprise Lifecycle Management solutions means we recognise the potential security risks that can occur when undertaking schemes within a live operational environment.

As well as working on Ministry of Justice projects, Waldeck can offer public and private sector clients, DfMA and M&E BIM based solutions in the buildings and development sector, for projects such as; schools, hospitals, hotels, high rise residential and student accommodation to name a few.

Our unique project experience combined with our market leading BIM capabilities allows us to hit the ground running, fitting directly into any team to deliver projects on time, on budget and to clients' expectations.



# The importance of a 'Principal Designer' for heavy industry and manufacturing projects

Following our 20 plus years involvement on projects within the manufacturing sector, Waldeck fully understand the need for a 'Principal Designer' within this sector, because capital projects can involve a large number of specialist contractors and designers, as well as a number of client based divisions all having unique requirements.

The introduction of the 'Principal Designer' within the CDM Regulations 2015 put the responsibility for managing Health and Safety risks firmly with the client and their design team, ensuring that such risks are considered at an early stage within the project life cycle and where possible eliminated before reaching the construction phase.

The 'Principal Designer' plays a pivotal role in influencing how these risks to health and safety are managed and communicated to all parties. Design decisions made during the pre-construction phase have a significant influence in ensuring the project is delivered in a way that secures the health and safety of everyone affected by the work during construction, operation, maintenance and decommissioning/demolition.

Waldeck recognise that clients prefer to communicate with a single point of contact to deliver solutions for their

investments and with this Waldeck ensure a collaborative working ethos among the entire project team.

Waldeck as 'Principal Designer' will plan, manage and monitor the coordination of the pre-construction phase, including any preparatory work carried out, we will:

- Assist clients in obtaining and collating pre-construction information
- Ensure that all designers co-operate and comply with their duties
- Provide pre-construction information to designers and contractors
- Liaise with the principal contractor for the duration of appointment
- Prepare the Healthy and Safety file


Ensuring the successful execution of a project in relation to the role of principal designer, Waldeck place great emphasis on building and maintain positive working relations with all parties, enabling the successful provision and flow of information to ensure health and safety is considered when making informed decisions.

Warren Monks who leads Waldeck's service said that: "Communication, collaboration and culture is crucial in delivering best practice and successful outcomes."

## BENEFITS

- Health and Safety Risks are identified early in the project and where possible eliminated
- Risks that cannot be eliminated are highlighted and control measures put in place
- Project co-ordination is enhanced enabling all parties to cooperate in a meaningful way
- All phases of a project life cycle are considered
- Health and safety risks are managed accordingly
- Supports operation and maintenance facilities





# Multinational Pharmaceutical Production Facility

**Waldeck have worked with long-term multinational pharmaceutical client since 2004, most recently providing architectural, civil and structural designs on their pharmaceutical production facility.**

## **PROJECT BACKGROUND**

The company's pharmaceutical production facility specialises in the production and packaging of unit dose medicines, which is recognised globally for the development of specialist technologies and achieving sterile packaging of these products.

To secure the long term future of the site, the multinational company ensure that their staff are trained to operate the latest machinery and implement the latest processes.

This project is designed to provide a sterile, factory grade training room and further office specification training suites with the flexibility to provide a large conference suite.

## **SERVICES PROVIDED BY WALDECK**

Waldeck led the design from development of the concept, producing presentation material for the planning and neighbour consultations, achieving planning approval for the scheme.

At detailed design stage, Waldeck produced architectural, civil and structural designs and have been responsible for achieving regulatory approvals.

## **CHALLENGES**

The proposals were potentially contentious due to the proximity of the extension to some residential neighbours of the facility. Plans to construct occupied space at first floor level could have been perceived to risk a privacy issue and light.

Waldeck undertook an environmental lighting impact assessment and used existing survey and Geographic Information System (GIS) satellite levels data to produce a digital 3D Visually Accurate Representation (VAR) of the facility and the existing houses which allowed a 9m high visual barrier to be designed which blocked line of sight from the windows to the residences. The model was then used during neighbour consultation to demonstrate that the extension would not adversely impact their amenity.

## **THE RESULT**

Waldeck's use of the digital 3D VAR allowed a seemingly infeasibly challenging project to be proven as not a bad problem and agreed by the site's neighbours and planning consent granted by the Local Authority. During detailed design and construction, Waldeck assisted the construction management team in delivering the project below the forecast budget and to a fast-tracked programme, allowing early occupation of the training facility.



# Port Clarence Biomass Wood Waste to Energy Facility

**Construction of the £200 million biomass plant in Teesside is due for completion and entering into full commercial operations in 2018.**

The construction of the plant is being carried out by Babcock Wilcox Volund and Lagan Construction for Eco2 with the installation of Engineering Services being carried out by SES Ltd.

Commissioned by SES, Waldeck were first involved when the project started in 2015, providing full mechanical and electrical building services design to enable the safe, efficient delivery of the energy plant.

Services included, but not limited to:

- HVAC Systems to service the process and non-process areas
- LV Distribution
- Small Power & Containment
- Internal lighting in process and non-process areas
- Water services and drainage
- Coordination of external services using Autodesk Revit
- External fire hydrants and fire sprinkler tank
- Process heat calculations to determine requirements for process area natural and mechanical ventilation requirements.

“

With the project drawing to a close, we would like to thank Waldeck for their collaborative and professional approach, utilising their digital design solutions.

Waldeck used Autodesk Revit to coordinate the mechanical and electrical services, using the model to automate output schedules of the M&E Revit family equipment from the information contained within the model. The 3D equipment objects have the schedule information embedded within them, so that any changes to the model equipment will automatically update the schedules – avoiding human error.

Navisworks was vital in allowing adjustments to mitigate clashes at the design stage with other team members – preventing costly mistakes at build stage. Through inputting the M&E model into Navisworks, Waldeck enabled all parties to view the M&E services in line with the process equipment.

Andy Inkson, Project Lead, said: “This low carbon development is significantly important for helping the UK achieve its 2020 renewable energy targets and it is with great pleasure we have been able to provide our Low Carbon expertise to this project, while working collaboratively with key stakeholders to ensure that the project exceeds our client’s expectations.”

The facility, when complete, will provide 40MW of renewable energy to the UK energy market through the combustion of waste wood.

Mark Harrison, SES Engineering Services, said: “With the project drawing to a close and only 10 months left to be completed, we would like to thank Waldeck for their collaborative and professional approach, utilising their digital design solutions.



# Annual survey shows staff are collaborative and highly motivated



**The results of a staff survey conducted last year, reveal that 94 per cent of our employees are motivated to see Waldeck succeed across a whole range of business initiatives and strategies.**

The survey, which is carried out annually, has shown that employees place a high level of importance, and believe we are performing well in the following areas:

- **Teamwork** – 89% of staff agree they are proud to be a member of their team
- **Workplace safety** – 73% of staff agreed that there is a strong Health and Safety culture within the company
- **Staff Training and Development** – 72% of staff agreed learning and development is an everyday activity
- **Equality and Diversity** – 94% of staff agreed that Waldeck values diversity in the workplace
- **Employer of Choice** – 72% of staff would encourage and promote others to work at Waldeck

Sue Wright, Deputy Managing Director and Chair of the Employee Engagement Committee, said: “The survey is conducted to get a better understanding of our performance, culture and relationships, how we go about our work and where we are heading. In order to continually improve the business, these results have offered us the opportunity to identify what is important to employees, as well as areas that require improvement.

“The delivery of excellent services, comes from not only our expertise and capabilities, but also through the commitment of our workforce, so it is a delight to see that such an exceptional level of motivation and energy across the business exist, but we can never be complacent and must continue to improve on these excellent results.”

**94%** of staff agreed that Waldeck values diversity in the workplace

**89%** of staff agree they are proud to be a member of their team



## Investing in staff training

Through our investment in staff training and development, including in-house training, our Waldeck Academy and our ICE approved Graduate Training Programme, we believe that the commitment to our staff is one of the key drivers to the business' success.

We continue to invest heavily in our staff, assisting them to get the right training and personal development, so that they can be successful in their work and future career ambitions, within Waldeck and beyond.

Most recently, four of our Waldeck Academy recruits, completed their Level 3 NVQ Diploma in Construction Contracting Operations (Planning).

The course, which was split in practicable and theory, consisted of seven modules, ranging from Health and Safety and Assessing and Planning Project Methods to Progress in Construction.

Janet Shrapel, HR Manager, said: "We have a strong commitment to education, training and development for those looking to build a career within engineering, construction and design and through investing in developing our staff is helping us to sustainably grow into exciting markets and our people to become recognised as top performers by our clients."

"We continue to invest heavily in the latest hardware and software to ensure we are working with the best technology to add value to our clients' projects whilst being able to nurture the next generation of designers and technicians."



## Recruiting for 2017 Graduate Training Scheme

**Following the success of last years' specialist graduate scheme, Waldeck are looking to find their second cohort of top graduates to embark on the intensive 12-week training programme.**

Committed to the education, training and development of graduates, school leavers and students, Waldeck are taking on a number of University leavers, supporting them to build a career within design, engineering, construction and digital industries.

The unique 12-week training programme provides graduates with a combination of tailored classroom sessions along with on-the-job training delivered across our national network of offices.

The training is led by our Technical Director and covers a number of disciplines including:

- Building Information Modelling and the digital way of working
- Health and Safety
- Software, hardware, tools and integration
- Risk Assessments
- Report Skills

Waldeck are accredited with The Investors in Education Award, and graduates will also gain the Institute

of Civil Engineering (ICE) Engineering Technician qualification upon completion of their training.

Veronica Ruby, Associate Director, said: "The 2016 Graduate Scheme was a real success with all six graduates completing the scheme and securing full time positions across our network of offices. I am enthusiastic that the 2017 scheme will see the same success, with some fresh talent of graduates across Europe.

"With digital at the forefront of what we do, the Graduate Training Scheme is an exciting opportunity to take on the best graduates who can quickly adapt and integrate into the world of ever-revolving technology.

Nikolaïs Georgopoulou a Graduate Engineer in Newark completed the 2016 Graduate Training Scheme, said: "I have passion and energy for my new beginning and Waldeck has provided me with this future-proof training program. I am aspired to be a useful and important member of this team. Thank you, Waldeck."

We are looking for fresh talent across all of our disciplines, if you hold an engineering based degree and would be interested in being part of our next cohort of aspiring graduates, please contact our Recruitment Officer, Becky Hicks on 08450 990285.

## Another successful year for Waldeck at the 2017 Multimodal Exhibition

**Waldeck Consulting exhibited for the fifth year running at the 11th annual Multimodal Exhibition, the UK and Ireland's biggest transport and logistics event at the beginning of April.**

The event which took place at the Birmingham NEC over three days, hosted over 9,000 attendees and 275 exhibitors from across the logistics and transportation sector.

Delving deeper into the virtual world, Waldeck stand visitors took the opportunity to immerse themselves in a life-like 3D port model wearing our Virtual Reality headsets.

On another section of our stand, we showcased a 3D animation of a port facility, showing optimised routes around the port, established as part of our Smart Ports offering.

Elsewhere across the show, Multimodal teamed up with the Chartered Institute of Logistics and Transport (CILT), the United Kingdom Warehousing Association (UKWA), the Food Storage & Distribution Federation (FSDF) and the Freight Transport Association (FTA) to deliver a programme of educational seminars tackling the issues and trends which affect supply chain decision makers.

Waldeck representatives attended a number of the seminars, including; Warehouses of the Future, Brexit Masterclass and The Future of Rail Freight, to name a few.

Sue Wright, Deputy Managing Director, said: "Another successful year for us at Multimodal, catching up with existing clients and discussing new opportunities with other potential clients.

"Showcasing our digital offering of Virtual Reality and our iCapture4Modelling service, caught the attention of new and existing clients."



## Waldeck picks up a prestigious RoSPA Award

**Waldeck is a winner at the RoSPA Health and Safety Awards 2017, achieving the Silver award in the prestigious annual scheme run by the Royal Society for the Prevention of Accidents (RoSPA).**

We will be presented with the award during a ceremony at the Hilton Birmingham Metropole hotel on Wednesday, July 12, 2017.

Through the RoSPA Awards scheme, which is open to businesses and organisations of all types and sizes from across the UK and overseas, judges consider entrants' overarching occupational health and safety management systems, including practices such as leadership and workforce involvement. The awards are now in its 61st year.

Julia Small, RoSPA's head of awards and events, said: "The RoSPA Awards are the most prestigious in the world of occupational health and safety, and held in high regard around the world, as winning one demonstrates an organisation's commitment to maintaining an excellent health and safety record. Achieving the standard required is no mean feat.

"This is a special year in the history of RoSPA, and we congratulate all of our winners in this, our centenary year".

The majority of awards are non-competitive and mark achievement at merit, bronze, silver and gold levels. Gold medals, president's awards and orders of distinction are presented to organisations sustaining the high standards of the gold level over consecutive years. For the first time in 2017, the Patron's Award has been presented to those organisations that have achieved consecutive gold awards for 25 years or more.

Competitive awards go to the best entries in 24 industry sectors including construction, healthcare, transport and logistics, engineering, manufacturing and education.

Headline sponsor of the RoSPA Awards 2017 is NEBOSH – the National Examination Board in Occupational Safety and Health – for the 12th consecutive year.







## Waldeck employee shortlisted for international award

**Sleaford-based, Sophie Harwood has been shortlisted by the British Safety Council for their 2017 Awards, under the 'Young Health and Safety Champion' category.**

Sophie, who has been with Waldeck since 2014, showed a keen interest in health and safety from the get go, and is now the Healthy and Safety (H&S) representative within the Sleaford office, but also an ambassador for the rest of the company.

Warren Monks, Head of SHEQ at Waldeck said: "Recently, Waldeck were presented with the International Safety Award and it is because of this, we were able to put Sophie forward for this award.

"Sophie being shortlisted is an incredible achievement which gives great recognition for the hard work she has put in to continually embed a positive Health and Safety culture throughout the Waldeck team and I wish her the best of luck."

Sophie Harwood, Junior BIM Technician and Waldeck's UAV & Digital Capture Specialist, said: "I have a keen interest in health and safety, so I am delighted to have been shortlisted for these prestigious awards.

"I am the H&S champion for the Sleaford office, but I also help to implement a number of new initiatives which are embedded throughout the business, most recently, organising First Aid at Work and Fire Marshall training for chosen individuals across our network of offices."

These awards were introduced to recognise individuals who, through their passion, commitment and dedication, have helped make a difference by keeping their colleagues and others healthy and safe.

## International Safety Award for Waldeck

**Waldeck's Head Office has been presented with the International Safety Award for protecting its employees from the risk of injury and ill health at work.**

The award is in recognition of their commitment to keeping workers and workplaces healthy and safe during 2016.

Now in their 59th year, the International Safety Awards recognise and celebrate organisations from around the world which have demonstrated to the satisfaction of the scheme's independent judges their commitment to preventing workplace injuries and work-related ill health during the previous calendar year.

Mike Robinson, Chief Executive of the British Safety Council, congratulated Waldeck's Head Office on their success in winning an International Safety Award 2017 with a Pass: "The British Safety Council commends Waldeck on their achievement. The award is in recognition of their commitment and efforts to keep their employees and workplaces free of injury and ill health.

“  
This recognition is thanks to our proactive attitude to the management of risk.

"Sensible and proportionate management of health and safety risks at work brings lasting benefits for workers, their families, businesses and society as a whole. By celebrating and sharing the achievements of the winners of the International Safety Awards, we encourage businesses all over the world to follow their lead and place employees' health and safety at the heart of their business. Our warmest congratulations!"

Warren Monks, Head of Safety, Health, Environment and Quality (SHEQ) at Waldeck said: "Health and Safety is extremely important to all of us at Waldeck, and we are delighted to receive this award in recognition of our continued hard work and commitment.

"This recognition is thanks to our proactive attitude to the management of risk, as we strive to ensure that there is an absence of harm to all our colleagues, clients and visitors."



#### **GENERAL ENQUIRIES**

Contact: Charlotte Watson  
enquiries@waldeckconsulting.com  
Telephone: 08450 990285

#### **DIGITAL TWIN SOLUTIONS ENQUIRIES**

Contact: Paul Waldeck  
paul.waldeck@waldeckconsulting.com  
Telephone: 08450 990285

#### **SALES ENQUIRIES / PR & MEDIA**

Contact: Hannah Wharton  
hannah.wharton@waldeckconsulting.com  
Telephone: 01529 298055

#### **CAREER OPPORTUNITIES**

Contact: Becky Hicks  
enquiries@waldeckconsulting.com  
Telephone: 08450 990285

[www.waldeckconsulting.com](http://www.waldeckconsulting.com)